



Private Property Rainwater Reduction Program

Excess rain and ground water that infiltrates the City's aging sanitary sewer system significantly increases wastewater treatment costs and overloads the capacity of our aging sewer system. Many of the contributing sources are leaks and improper connections on private property, often prevalent in older neighborhoods. The City's EcoFlow Program provides funding and qualified technicians in order to locate and fix these problems. Depending on the location of your property, you may be eligible to participate in the EcoFlow program.

Why do we need to fix these leaks and improper connections?

Fixing the leaks and improper connections that contribute excess water to our City's sanitary system helps us:

- Decrease the need for and related costs of adding or upsizing sewer lines, treatment plants, and lift stations.
- Prevent public health issues due to sewage backups.
- Eliminate higher treatment costs that require additional chemicals and energy.
- Stay in compliance with environmental regulations.

How does rain and ground water enter our sanitary sewer system?

Uncapped, Damaged Clean-outs



Improperly Connected Driveway Drains



Improperly Connected Sump Pumps



Improperly Connected Foundation Drains



How much will property owners in the EcoFlow Program area be liable to pay for eligible repairs?

Nothing! If your property is located in the EcoFlow Program area, the initial plumbing evaluation and any needed repairs are at *NO COST* to you. Approved evaluations and repair costs are paid by the City of Lawrence.

Repaired Clean-out



My property is in the EcoFlow Program area. How do I participate?

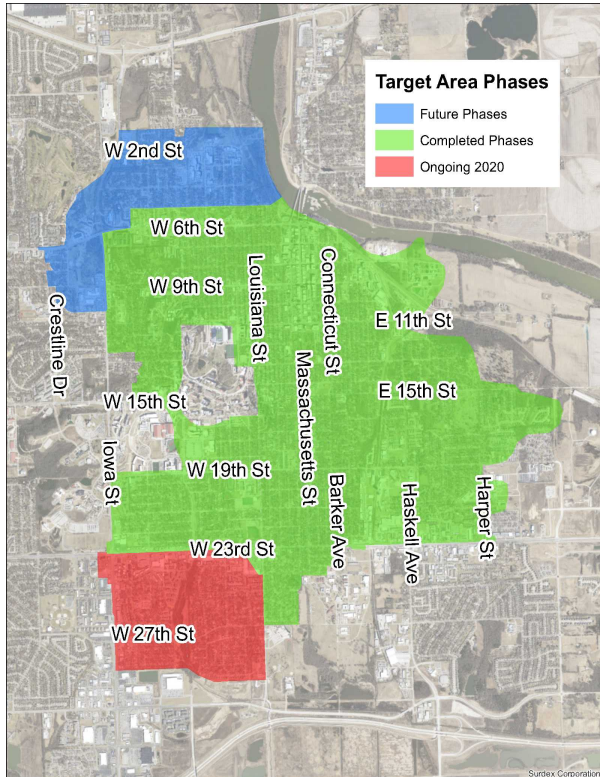
- Contact the EcoFlow Program to schedule your *FREE* plumbing evaluation.
- If the plumbing evaluation identifies eligible repairs, enroll in the Program.
- After enrolling, select a participating plumber to make the approved repairs.
- Approved repairs are inspected by EcoFlow Program technicians in order to ensure satisfactory completion.
- The costs of approved, satisfactory repairs are paid in full by the City's EcoFlow Program.

What properties are covered by the EcoFlow Program?

This map shows the general area covered by the EcoFlow Program. The Program area is divided into 8 phases, based on priority. Current plans are for one phase to be completed each year through the year 2021. On the map, you will see project areas noted by varying colors.

For detailed information about the EcoFlow Program covered area and to see if your property is covered:

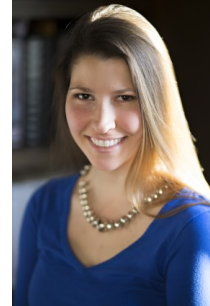
- Call the EcoFlow Hotline, 785-832-3003
- Email EcoFlow representatives at: lawrenceecoflow@gmail.com
- Check the website at: <http://www.lawrence-ecoflow.org>



Look for our friendly EcoFlow Program evaluation crews in YOUR area!



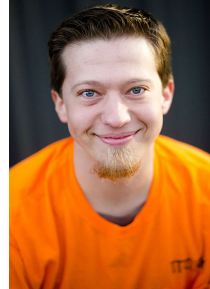
Kellen J.



Erin L.



Mike D.



Teddy T.



Schedule your appointment today!

**EcoFlow Hotline:
785-832-3003**

**EcoFlow Email:
lawrenceecoflow@gmail.com**



**Private Property
Rainwater
Reduction
Program**

**EcoFlow Hotline:
785-832-3003**

**EcoFlow Email:
lawrenceecoflow@gmail.com**

**EcoFlow Website:
<http://www.lawrence-ecoflow.org>**

